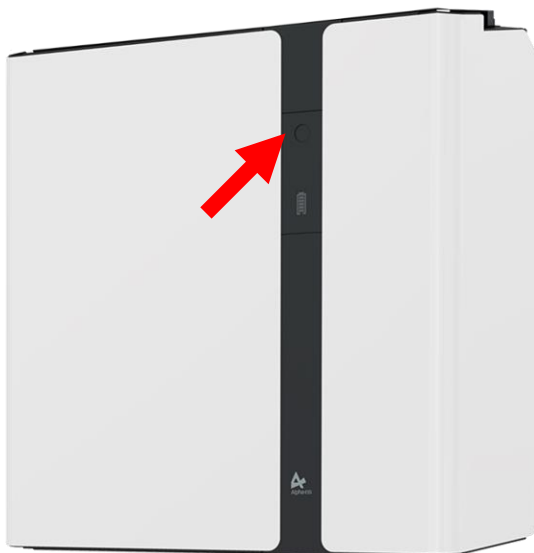


Alpha ESS SMILE5 (V2) Shutdown and Startup Procedure

1. Pull the middle module cover off and then unclip (and open) the lever found on the right-hand side of the switch panel found behind.



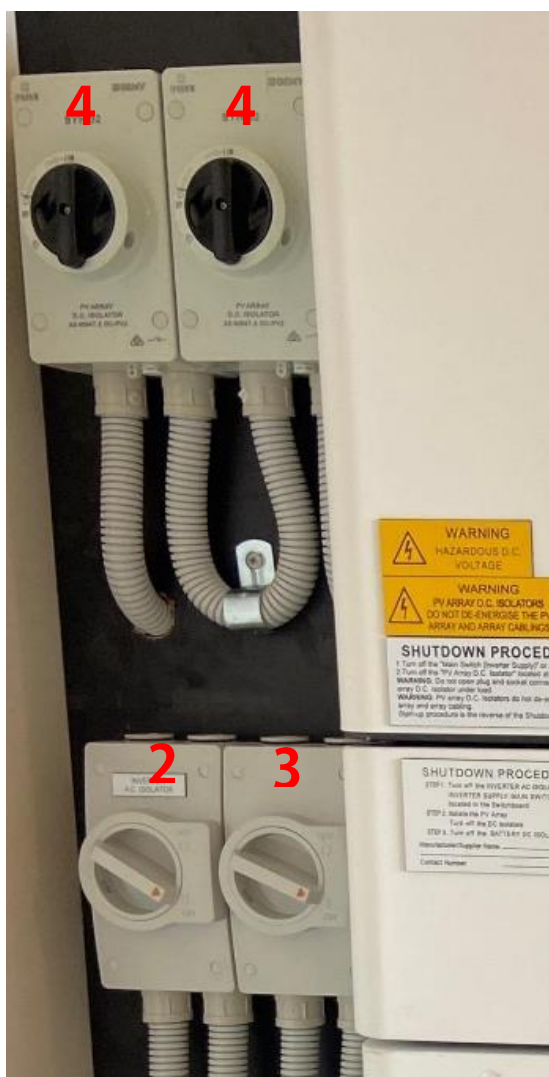
2. Power off the battery modules by holding down the battery's power button found on the bottom module for 10 seconds.



3. Turn off the switches in the following order:
 1. Battery Isolator



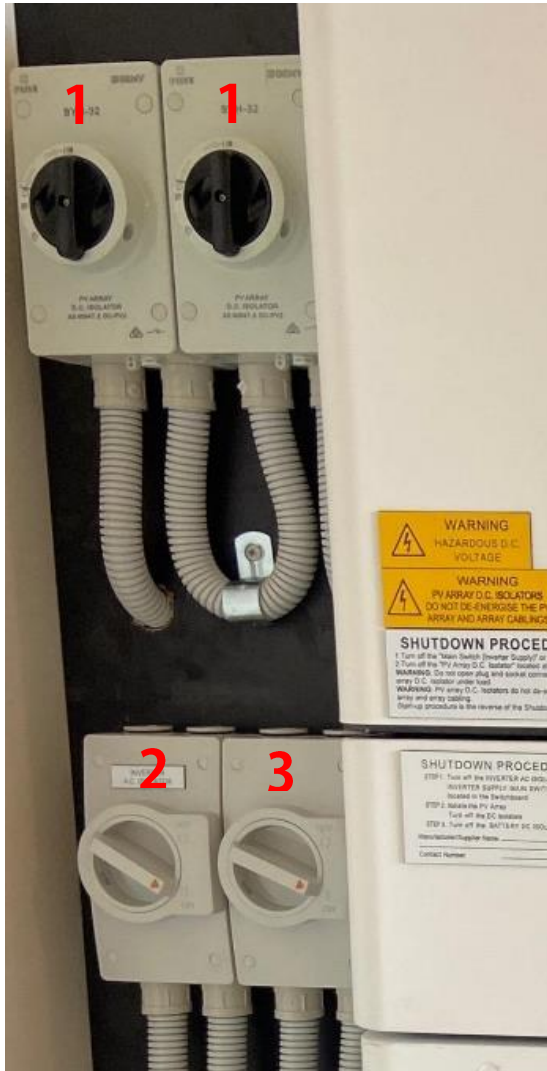
2. Grid Isolator
3. Backup Isolator
4. PV Isolator



4. Wait 30 Seconds.

5. Turn the switches back on in the following order:

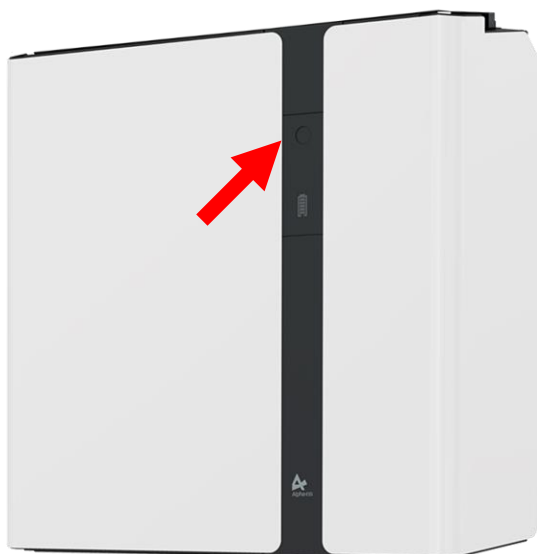
1. PV Isolator
2. Grid Isolator
3. Backup Isolator



4. Battery Isolator



6. Turn on the battery modules by pressing the battery's power button briefly.



7. Observe the lights on the top module, ensuring the device has reconnected to your Wi-Fi. This may take up to 5 minutes.



8. Close the panel and replace the cover.